



QUALITY • INNOVATION • HYDROTHERAPY

2015





You'll love the way your MAA X Collection hot tub looks in your backyard.

The time has come to transform your backyard into a relaxing spa environment. Owning a personal spa allows you the convenience of using it around your busy schedule, never leaving the comfort of your home. There are many MAA X Collection models available to personalize your spa experience and that will fit into any backyard design.

Your MAA X Collection hot tub has been engineered for hydrotherapy and relaxation. Performance Seating and Zone Therapy® jet systems are just a few of the exclusive features you will discover as you enjoy the benefits of your new spa.

NEW for 2015

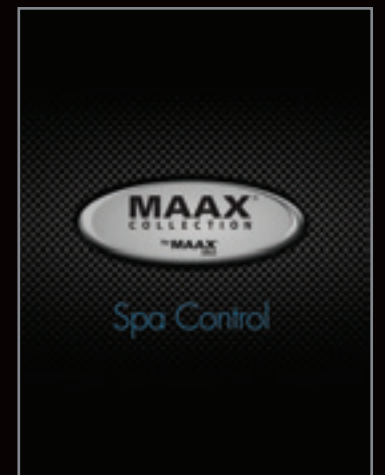
SmartTouch Control

The MAA X® Collection's NEW advanced SmartTouch control panels are easy to read and allow you, with the tap of your finger, to change the temperature, adjust lighting or control your massage. Unlike your smart devices this control works even when wet.



WiFi Connectivity

MAA X Collection hot tubs now put your spa's controls in the palm of your hand. Simply download the free app, sync to your home's WiFi system and enjoy complete control. Preset temperature, set filter cycles to save money, or get it ready from the comfort of your home before heading out to enjoy a relaxing spa experience.





The MAAX Collection 451 offers seating for three that includes a performance lounge and twenty nine adjustable jets. Designed for comfort and elegance, it's the perfect model for patios, decks and smaller backyards.



Options not shown

451

MODEL 451

Dimensions	64" X 81" (163 x 206 cm)
Depth	31" (79 cm)
Seating Capacity	3
Average Water Capacity.....	200 gal (757 L)
Weight (empty/full)	600/2200 lbs (91/998 kg)
Lounge	1
Bucket Seating.....	Yes
Illuminated Drink Holders	3
Illuminated Spa Controls.....	Yes
3.5" Underwater Light.....	Yes

STANDARD UTILITY FEATURES

WiFi Connectivity	Yes
Programmable Filter Cycles	Yes
Steel Sub-Structure	Yes
DuraMAAX™ Cabinetry	Yes
Thermo-Lock™ Insulation	Yes



Pump1	2.5Hp/4.8bHp, 230V, 2Sp
Electrical Requirements (4-Wire).....	240/30A/40A
SmartTouch Controls	Yes
Foot Relief Zone™	Yes
Head Cushions	3
Digital Color Optic Lighting (interior only)	Yes
Stainless Steel Accent Package	Yes
Jet Total	29

OPTIONAL FEATURES

CleanZone™ System	Yes
MP3/Bluetooth Music System	Yes



The MAAX Collection 461 is the perfect patio spa. The 461 features the rejuvenation of full body immersion and a variety of seating. The layout includes barrier free seating, deeper Zone Therapy™ seating and a lounge to accommodate any size.



Shown without X-Series Collar and MP3/Bluetooth Music System

461

MODEL 461

Dimensions.....	78" X 78" (198 x 198 cm)
Depth.....	35" (89 cm)
Seating Capacity	4
Average Water Capacity.....	300 gal (1136 L)
Weight (empty/full)	595/2995 lbs (270/1359 kg)
Lounges.....	1
Illuminated Drink Holders.....	2
Illuminated Spa Controls.....	Yes
Molded Grab Bars	1
Barrier Free Seating	Yes
3.5" Underwater Light	Yes

STANDARD UTILITY FEATURES

WiFi Connectivity	Yes
Programmable Filter Cycles	Yes
Steel Sub-Structure.....	Yes
DuraMAAX™ Cabinetry	Yes
Thermo-Lock™ Insulation	Yes



Pump1	2.5Hp/4.8bHp, 230V, 2Sp
Pump2	2.5Hp/4.8bHp, 230V, 2Sp
Electrical Requirements (4-Wire) ..	240/40A/60A
SmartTouch Controls	Yes
Comfort Collar™	1
Head Cushions.....	2
ChromaTherapy	Yes
Aurora Cascade Water Feature.....	2
Digital Color Optic Lighting (interior only) ...	Yes
Stainless Steel Accent Package	Yes
Jet Total	28

OPTIONAL FEATURES

AeroMAAX™ Plus	Yes
Air Jets.....	10
CleanZone™ System.....	Yes
Clean Zone™ II System with UV Light	Yes

MP3/Bluetooth Music System	Yes
Pedestal Lights.....	Yes
Dynamic Jet Sequencer.....	Yes
X-Series Collar	Yes



The MAAX Collection 470 has a unique interior design that allows comfortable seating for six while permitting full body immersion in the performance seat. This is the ideal model for those who enjoy outdoor entertaining or quiet conversation among friends.



Shown without X-Series Collar

470

MODEL 470

Dimensions	88" X 88" (224 x 224 cm)
Depth	35" (89 cm)
Seating Capacity	6
Average Water Capacity	395 gal (1495 L)
Weight (empty/full)	725/3885 lbs (329/1762 kg)
Bucket Seating	Yes
Illuminated Drink Holders	4
Illuminated Spa Controls.....	Yes
3.5" Underwater Light.....	Yes

STANDARD UTILITY FEATURES

WiFi Connectivity	Yes
Programmable Filter Cycles	Yes
Steel Sub-Structure	Yes
DuraMAAX™ Cabinetry	Yes
Thermo-Lock™ Insulation.....	Yes



Pump1	3.0Hp/5.9bHp, 230V, 2Sp
Pump2	3.0Hp/5.9bHp, 230V, 2Sp
Electrical Requirements (4-Wire)240/40A/60A
SmartTouch Controls	Yes
Comfort Collar™	2
Foot Dome	Yes
Zone Therapy™ Seat	Yes
Shiatsu Seat.....	Yes
Head Cushions	2
ChromaTherapy	Yes
Aurora Cascade Water Feature.....	2
Digital Color Optic Lighting (interior only)	Yes
Stainless Steel Accent Package	Yes
Jet Total.....	48

OPTIONAL FEATURES

AeroMAAX™ Plus	Yes
Air Jets	10
CleanZone™ System.....	Yes
Clean Zone™ II System with UV Light.....	Yes

MP3/Bluetooth Music System	Yes
Pedestal Lights.....	Yes
Dynamic Jet Sequencer	Yes
X-Series Collar	Yes



The MAAX Collection 471 is our most popular hot tub and offers a single performance lounge with a Foot Relief Zone™ and seating for up to six spa enthusiasts. There are two bucket seats with our specially designed Comfort Collar™ and Zone Therapy™ feature. This popular size is perfect for families or couples.



Shown without X-Series Collar

471

MODEL 471

Dimensions	88" X 88" (224 x 224 cm)
Depth	35" (89 cm)
Seating Capacity	6
Average Water Capacity	420 gal (1590 L)
Weight (empty/full)	725/4085 lbs (329/1853 kg)
Lounges	1
Bucket Seating	Yes
Illuminated Drink Holders	4
Illuminated Spa Controls	Yes
Molded Grab Bars	1
3.5" Underwater Light	Yes

STANDARD UTILITY FEATURES

WiFi Connectivity	Yes
Programmable Filter Cycles	Yes
Steel Sub-Structure	Yes
DuraMAAX™ Cabinetry	Yes
Thermo-Lock™ Insulation	Yes



Pump1	3.0Hp/5.9bHp, 230V, 2Sp
Pump2	3.0Hp/5.9bHp, 230V, 2Sp
Electrical Requirements (4-Wire)	240/40A/60A
SmartTouch Controls	Yes
Foot Relief Zone™	Yes
Comfort Collar™	2
Zone Therapy™ Seat	Yes
Shiatsu Seat	Yes
Head Cushions	3
ChromaTherapy	Yes
Aurora Cascade Waterfall Feature	2
Digital Color Optic Lighting (interior only)	Yes
Stainless Steel Accent Package	Yes
Jet Total	49

OPTIONAL FEATURES

AeroMAAX™ Plus	Yes
Air Jets	10
CleanZone™ System	Yes
Clean Zone™ II System with UV Light	Yes

MP3/Bluetooth Music System	Yes
Pedestal Lights	Yes
Dynamic Jet Sequencer	Yes
X-Series Collar	Yes



The MAAX Collection 472 is the ideal spa for those couples looking to relax together. This model offers a performance lounge, standard lounge, one bucket seat with Zone Therapy™ and seating for five comfortably.



Shown without X-Series Collar and MP3/Bluetooth Music System

472

MODEL 472

Dimensions	88" X 88" (224 x 224 cm)
Depth	35" (89 cm)
Seating Capacity	5
Average Water Capacity	410 gal (1552 L)
Weight (empty/full)	725/4005 lbs (328/1817 kg)
Lounges	2
Bucket Seating	Yes
Illuminated Drink Holders	3
Illuminated Spa Controls	Yes
Molded Grab Bars	2
3.5" Underwater Light	Yes

STANDARD UTILITY FEATURES

WiFi Connectivity	Yes
Programmable Filter Cycles	Yes
Steel Sub-Structure	Yes
DuraMAAX™ Cabinetry	Yes
Thermo-Lock™ Insulation	Yes



Pump1	3.0Hp/5.9bHp, 230V, 2Sp
Pump2	3.0Hp/5.9bHp, 230V, 2Sp
Electrical Requirements (4-Wire)	.240/40A/60A
SmartTouch Controls	Yes
Foot Relief Zone™	Yes
Calf Zone	Yes
Comfort Collar™	1
Zone Therapy™ Seat	Yes
Head Cushions	3
ChromaTherapy	Yes
Aurora Cascade Water Feature	2
Digital Color Optic Lighting (interior only)	Yes
Stainless Steel Accent Package	Yes
Jet Total	47

OPTIONAL FEATURES

AeroMAAX™ Plus	Yes
Air Jets	10
CleanZone™ System	Yes
Clean Zone™ II System with UV Light	Yes

MP3/Bluetooth Music System	Yes
Pedestal Lights	Yes
Dynamic Jet Sequencer	Yes
X-Series Collar	Yes



The MAAX Collection 480 is one of the largest spas in the MAAX Collection Series. It offers six barrier-free seats, two Comfort Collars™, and a variety of jet patterns. This is the perfect spa for entertaining guests in your backyard retreat.



Shown without X-Series Collar

480

MODEL 480

Dimensions.....	91.5" x 91.5" (248 x 248 cm)
Depth	38" (97 cm)
Seating Capacity	6
Average Water Capacity.....	435 gal (1647 L)
Weight (empty/full)	785/4265 lbs
.....	(356/1935 kg)
Barrier Free Seating	Yes
Illuminated Drink Holders	5
Illuminated Spa Controls.....	Yes
3.5" Underwater Light	Yes

STANDARD UTILITY FEATURES

WiFi Connectivity	Yes
Programmable Filter Cycles	Yes
Steel Sub-Structure	Yes
DuraMAAX™ Cabinetry	Yes
Thermo-Lock™ Insulation	Yes



Pump1	3.0Hp/5.9bHp, 230V, 2Sp
Pump2.....	3.0Hp/5.9bHp, 230V, 2Sp
Electrical Requirements (4-Wire) ..	240/40A/60A
SmartTouch Controls	Yes
Comfort Collar™	2
Foot Dome	Yes
Zone Therapy™ Seat.....	Yes
Shiatsu Seat	Yes
Head Cushions	2
ChromaTherapy.....	Yes
Illuminated Waterfall Feature.....	2
Digital Color Optic Lighting (interior only)	Yes
Stainless Steel Accent Package	Yes
Jet Total	51

OPTIONAL FEATURES

AeroMAAX™ Plus	Yes
Air Jets	10
CleanZone™ System.....	Yes
Clean Zone™ II System with UV Light.....	Yes

MP3/Bluetooth Music System	Yes
Pedestal Lights.....	Yes
Dynamic Jet Sequencer	Yes
X-Series Collar	Yes

The MAAX Collection 481 can seat six comfortably with bucket seating and a performance lounge. The therapy package also offers the Foot Relief Zone™ for the ultimate spa experience. Extra space and an oversized footwell ensure additional room to stretch.



Shown without X-Series Collar

481

MODEL 481

Dimensions.....	91.5" x 91.5" (248 x 248 cm)
Depth	38" (97 cm)
Seating Capacity	6
Average Water Capacity.....	455 gal (1722 L)
Weight (empty/full)	785/4425 lbs
.....	(356/2007 kg)
Lounges.....	Yes/Single
Bucket Seating.....	Yes
Illuminated Drink Holders	3
Illuminated Spa Controls.....	Yes
Molded Grab Bars.....	1
3.5" Underwater Light.....	Yes

STANDARD UTILITY FEATURES

WiFi Connectivity	Yes
Programmable Filter Cycles	Yes
Steel Sub-Structure	Yes
DuraMAAX™ Cabinetry	Yes
Thermo-Lock™ Insulation	Yes



Pump1	3.0Hp/5.9bHp, 230V, 2Sp
Pump2.....	3.0Hp/5.9bHp, 230V, 2Sp
Electrical Requirements (4-Wire)	240/40A/60A
SmartTouch Controls	Yes
Foot Relief Zone™	Yes
Comfort Collar™	2
Zone Therapy™ Seat.....	Yes
Shiatsu Seat	Yes
Head Cushions	3
ChromaTherapy.....	Yes
Aurora Cascade Water Feature	2
Digital Color Optic Lighting (interior only)	Yes
Stainless Steel Accent Package	Yes
Jet Total	52

OPTIONAL FEATURES

AeroMAAX™ Plus	Yes
Air Jets	10
CleanZone™ System	Yes
Clean Zone™ II System with UV Light.....	Yes

MP3/Bluetooth Music System	Yes
Pedestal Lights.....	Yes
Dynamic Jet Sequencer.....	Yes
X-Series Collar	Yes



The MAAX Collection 482 has comfortable seating for five with a performance lounge and a conventional lounge, allowing you and your loved one to unwind together. The unique design offers a conversation area. The therapy package provides the Foot Relief Zone™ and Zone Therapy™ targeting both the upper and lower parts of the feet and back.



Shown without X-Series Collar and MP3/Bluetooth Music System

482

MODEL 482

Dimensions	91.5" x 91.5" (248 x 248 cm)
Depth	38" (97 cm)
Seating Capacity	5
Average Water Capacity	445 gal (1685 L)
Weight (empty/full)	785/4345 lbs (356/1971 kg)
Lounges	2
Barrier Free Seating	Yes
Illuminated Drink Holders	5
Illuminated Spa Controls	Yes
Molded Grab Bars	2
3.5" Underwater Light	Yes

STANDARD UTILITY FEATURES

WiFi Connectivity	Yes
Programmable Filter Cycles	Yes
Steel Sub-Structure	Yes
DuraMAAX™ Cabinetry	Yes
Thermo-Lock™ Insulation	Yes



Pump1	3.0Hp/5.9bHp, 230V, 2Sp
Pump2	3.0Hp/5.9bHp, 230V, 2Sp
Electrical Requirements (4-Wire)240/40A/60A
SmartTouch Controls	Yes
Foot Relief Zone™	Yes
Calf Zone	Yes
Comfort Collar™	2
Zone Therapy™ Seat	Yes
Head Cushions	2
ChromaTherapy	Yes
Aurora Cascade Water Feature	2
Digital Color Optic Lighting (interior only)	Yes
Stainless Steel Accent Package	Yes
Jet Total	52

OPTIONAL FEATURES

AeroMAAX™ Plus	Yes
Air Jets	10
CleanZone™ System	Yes
Clean Zone™ II System with UV Light	Yes

MP3/Bluetooth Music System	Yes
Pedestal Lights	Yes
Dynamic Jet Sequencer	Yes
X-Series Collar	Yes

The 581 was designed to transform your backyard into the perfect spa retreat. With a little imagination you can integrate the design of this hot tub into your modern backyard. Add your own personal touch to the look by incorporating decorative elements into the patented exhibition edge. As the 581 becomes the centerpiece of your retreat, it also provides physician-designed hydrotherapy. Enjoy the beauty of this modern work of art as you slip into its therapeutic waters.



Small River Rock in Varying Colors

Decorative accents can be purchased from local landscapers, quarries and home improvement retailers.



Tumbled Glass



Large River Rock in One Color



581

MODEL 581

Dimensions	91.5" X 91.5" (248 x 248 cm)
Depth	35" (89 cm)
Seating Capacity	6
Average Water Capacity.....	420 gal (1590 L)
Weight (empty/full)	898/4085 lbs
.....	(407/1853 kg)
Lounges	1
Bucket Seating.....	Yes
Illuminated Spa Controls.....	Yes
Molded Grab Bars.....	1
3.5" Underwater Light	Yes
Stainless Steel Accent Package	Yes

STANDARD UTILITY FEATURES

WiFi Connectivity	Yes
Programmable Filter Cycles	Yes
Steel Sub-Structure	Yes
DuraMAAX™ Cabinetry	Yes
Thermo-Lock™ Insulation	Yes



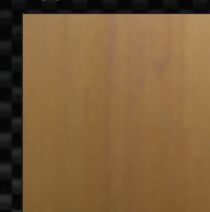
Pump1	3.0Hp/5.9bHp, 230V, 2Sp
Pump2	3.0Hp/5.9bHp, 230V, 2Sp
Aurora Cascade Pump 1.0Hp 115V, 1Sp	
Electrical Requirements (4-Wire) ..	240/40A/60A
SmartTouch Controls	Yes
Foot Relief Zone™	Yes
Zone Therapy™ Seat.....	Yes
Shiatsu Seat	Yes
Head Cushions	3
ChromaTherapy.....	Yes
Aurora Cascade Water Feature	4
Digital Color Optic Lighting (interior only)	Yes
Stainless Steel Accent Package	Yes
Jet Total	51

OPTIONAL FEATURES

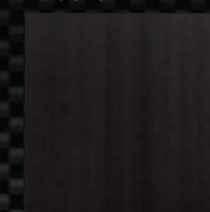
CleanZone™ System	Yes
Clean Zone™ II System with UV Light.....	Yes
MP3/Bluetooth Music System	Yes
Dynamic Jet Sequencer	Yes
Pedestal Lights.....	Yes

SIDING COLORS

Teak



Mocha



The 780 is a blend of spacious design and specialized hydrotherapy. There is seating for 7 adults in a variety of jetting arrays to meet the different needs of the bather. The 780 incorporates two Zone Therapy™ seats, dual shiatsu seats and a side by side conversation area for couples to curl up in.



780

MODEL 780

Dimensions91.5" x 91.5" (248 x 248 cm)
Depth38" (97 cm)
Seating Capacity7
Average Water Capacity365 gal (1382 L)
Weight (empty/full)785/3705 lbs(356/1681 kg)
Barrier Free SeatingYes
Illuminated Drink Holders7
Illuminated Spa ControlsYes
Molded Grab Bars0
3.5" Underwater LightYes

STANDARD UTILITY FEATURES

WiFi ConnectivityYes
Programmable Filter CyclesYes
Steel Sub-StructureYes
DuraMAAX™ CabinetryYes
Pump13.0Hp/5.9bHp, 240V, 2Sp
Pump23.0Hp/5.9bHp, 240V, 2Sp
Pump 33.0Hp/5.9bHp, 240V, 2Sp
Electrical Requirements (4-Wire)	.240/40A/60A
SmartTouch ControlsYes
Comfort Collar™1
Thermo-Lock™ InsulationYes

Zone Therapy™ SeatYes
Shiatsu SeatYes/2
Wrist JetsYes
Love SeatYes
Illuminated Waterfall FeatureYes/2
Head Cushions5
ChromaTherapyYes
Digital Color Optic Lighting (interior only)	...Yes
Jet Total69

AeroMAAX™ PlusYes
Air Jets10
CleanZone™ SystemYes
Clean Zone™ II System with UV LightYes
MP3/Bluetooth Music SystemYes
Stainless Steel Accent PackageYes
Pedestal LightsYes
Dynamic Jet SequencerYes





The 781 has seating for 5 adults with a variety of hydrotherapy systems. The "performance" lounge has a Foot Relief Zone™ and a dynamic jet sequencer for a head to toe hydrotherapy experience. The 781 includes a Zone Therapy™ seat, a shiatsu seat and a conversation area to deliver a complete hydrotherapy experience.



781

MODEL 781

Dimensions	91.5" x 91.5" (248 x 248 cm)
Depth	38" (97 cm)
Seating Capacity	5
Average Water Capacity	400 gal (1514 L)
Weight (empty/full)	850/4050 lbs (386/1837 kg)
Lounges	1
Barrier Free Seating	Yes
Illuminated Drink Holders	6
Illuminated Spa Controls	Yes
3.5" Underwater Light	Yes

STANDARD UTILITY FEATURES

WiFi Connectivity	Yes
Programmable Filter Cycles	Yes
Steel Sub-Structure	Yes
DuraMAAX™ Cabinetry	Yes
Pump1	2.5Hp/4.8bHp, 230V, 2Sp
Pump2	3.0Hp/5.9bHp, 230V, 2Sp
Pump2	2.5Hp/4.8bHp, 230V, 1Sp
Electrical Requirements (4-Wire)240/40A/60A
SmartTouch Controls	Yes
Foot Relief Zone™	Yes
ChromaTherapy	Yes

Thermo-Lock™ Insulation	Yes
Zone Therapy™ Seat	Yes
Shiatsu Seat	Yes
Head Cushions	5
Aurora Cascade Water Feature	2
Digital Color Optic Lighting (interior only)	Yes
Jet Total	60

AeroMAAX™ Plus	Yes
Air Jets	10
CleanZone™ System	Yes
Clean Zone™ II System with UV Light	Yes
MP3/Bluetooth Music System	Yes
Stainless Steel Accent Package	Yes
Pedestal Lights	Yes

OPTIONAL FEATURES

Dynamic Jet Sequencer	Yes
-----------------------------	-----





The largest spa in the line, the 811 features a full size lounge, Zone Therapy™ seat, effleurage and shiatsu massage. The over sized footwell allows plenty of space for exercising. Perfect for the entire family or those who demand the ultimate home spa experience.



811

MODEL 811

Dimensions90" x 114" (229 x 290 cm)
Depth38" (97 cm)
Seating Capacity6
Average Water Capacity480 gal (1817 L)
Weight (empty/full)935/4943 lbs(424/2242 kg)
Lounges1
Bucket SeatingYes
Love SeatYes
Illuminated Drink Holders5
Illuminated Spa ControlsYes
Molded Grab Bars1
3.5" Underwater LightYes

STANDARD UTILITY FEATURES

WiFi ConnectivityYes
Programmable Filter CyclesYes
Steel Sub-StructureYes
DuraMAAX™ CabinetryYes
Pump13.0Hp/5.9bHp, 240V, 2Sp
Pump23.0Hp/5.9bHp, 240V, 2Sp
Pump 33.0Hp/5.9bHp, 240V, 2Sp
Electrical Requirements (4-Wire)240/40A/60A
SmartTouch ControlsYes



Thermo-Lock™ InsulationYes
Comfort Collar™1
Chroma TherapyYes
Zone Therapy™ SeatYes
Head Cushions4
Aurora Cascade Water Feature2
Digital Color Optic Lighting (interior only)Yes
Jet Total57
AeroMAAX™ PlusYes
Air Jets20



CleanZone™ SystemYes
Clean Zone™ II System with UV LightYes
MP3/Bluetooth Music SystemYes
Stainless Steel Accent PackageYes
Pedestal LightsYes

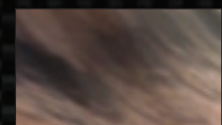
OPTIONAL FEATURES

Dynamic Jet SequencerYes
Exercise EquipmentYes

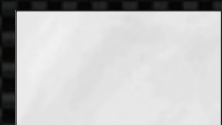
Sahara



Tuscan Sun



Silver Marble



Physician Designed Zone Therapy™

Whether it's diminishing the stresses of everyday life, healing a sports injury, relieving aching joints and stiff muscles due to arthritis or simply letting you achieve a good night's sleep - your MAAX Collection hot tub can help with Physician designed Zone Therapy™. **Zone Therapy™** utilizes strategically positioned jets to target specific pain zones that contain muscular trigger points. More jets don't necessarily mean a more effective massage. Precisely locating the correct size jet and massaging action where they are most effective is key to relieving pain and stiffness throughout the entire body. The Zone Therapy™ concept has been designed by medical specialists in the fields of physical rehabilitation and massage therapy.

Zone 1:
Suboccipital
Trigger points in the area where the neck meets the back of the head is a common cause of headaches. The Comfort Collar gently cradles your head while targeting this area.

Zone 3:
Paraspinal
Increased tension in the back muscles on either side of the spine can be linked to many medical conditions. An effective combination of jets provides soothing stimulation for incredible full body relief.

Zone 5:
Gluteal
Sitting can lead to increased tension in muscular trigger points surrounding the hips and upper thighs. Jets positioned at the sides of the seat bring you a stimulating massage to dissolve tension in these muscles.

Zone 6:
Foot Relief Zone™
Many important nerve endings in the feet connect to all parts of your body. Sore and tired feet can affect how we feel all over. The ingenious **Foot Relief Zone™** targets the upper and lower parts of the feet with streams of water that provide a complete massage for relaxation throughout the body.

Zone 2:
Trapezius
Trigger points can contribute to pain across the shoulders, and upper back. An array of Jets target these sensitive areas, providing an improvement in blood circulation and gently dissolving away the feeling of tension.

Zone 4:
Lumbosacral
Aching lower back pain is something most of us will experience. Back pain is linked to excess tension in muscular trigger points in the lower back. The swirling motion of the jets provides a massage to the lower back to loosen your knots of tension and bring relaxing relief.





TheraMAAX™

The proprietary TheraMAAX™ Jets utilize a scientifically designed grill surrounding the nozzle of the jet. This grill reduces drag on moving parts and cohesion of the jet stream. The TheraMAAX™ design maximizes performance and improves the massaging action. The three spoke stainless steel escutcheon provides a textured landing for your fingers. This natural shape and position of the landing areas make it easy to adjust the power of the jet.



TheraMAAX™ Directional Jet:
Designed to provide a direct
massage to larger muscle groups.



TheraMAAX™ Swirl Jet:
Swirling action provides an intermittent
massage covering a larger area.



Comfort Collar



This unique cushion supports your neck, cradling your head while adjustable cyclone jets massage neck and shoulder muscles. The Comfort Collar allows a relaxing massage above the water line.



Calf Zone



The Calf Zone massages the lower leg with 12 precisely located jets, increasing circulation and healing properties. This feature is great if you're on your feet a lot.



Foot Relief Zone



Sore and tired feet can affect how we feel all over. The ingenious **Foot Relief Zone™** targets the upper and lower parts of the feet with streams of water that provide a "spa for your feet".





Comfort Collar™

A neck massage therapy system is one of the most relaxing features in a spa. The reverse molded Comfort Collar's™ unique cushion supports your neck, gently cradling your head while adjustable cyclone jets massage neck and shoulder muscles. The Comfort Collar™ also allows a relaxing massage above the water line, it's like having your neck massaged by a loved one. This hallmark feature is one of the reasons many have already chosen a MAAX Collection hot tub.

Rejuvenate

X-Series Collar

The convenient X-series increases the seat size in the deep corner seat for physical freedom of movement and enhanced comfort for those who need it. Four strategically placed cluster jets provide a deep tissue neck massage to targeted pressure points, relieving tension.



Comfort

Comfortable seating is a top priority in the design of every MAAX Collection hot tub. With a wide variety of seating styles available, you'll find the perfect model to fit your shape and size. Depending on the model you prefer, seating ranges from an open style to those designed to keep you in position so the jets can work their miracles. You'll find each engineered to scientifically balance ergonomic support, water pressure, jet position and body buoyancy. Deeply contoured seating provides ultimate comfort, while armrests and footwells seem to mold to your body.



Performance Seating™

Performance Seating™ has earned us the reputation of having the most comfortable spas in the industry. Each seat is designed to provide full body immersion and proper posture, in harmony with their respective jetting pattern, for superior comfort and performance. Built-in Comfort Collars™ cradle your head while side bolsters hold your body in an ergonomic position. The shape and dimensions of each seat are designed to the curvature of the spine which provides correct posture, reducing stress on your lower back.

Technology

Powerworks™ with M7 Technology

An advanced, state of the art spa controller provides the ultimate in ease of use, safety and reliability for every spa user.

The **Powerworks™ with M7 technology** is a revolutionary new hardware/software platform that completely eliminates mechanical sensor switches and remote through-wall temperature sensors. The M7 platform features two identical solid state sensors that mount inside the heater manifold.

These "Smart Sensors" accurately and reliably measure water temperature while monitoring critical water conditions without the possibility of failure due to mechanical switch malfunction.



Designed to Last

Technically and functionally superior, your MAAX Collection hot tub has been designed to deliver years of trouble-free enjoyment. Every aspect of it's mechanical operation is "Appliance Grade" and recognized as setting the standard for reliability and serviceability.

56 Frame Pump

MAAX Collection hot tubs utilize industrial duty dual speed **56 frame pumps** in all of their 240 volt models. The 56 frame motor is larger, more powerful and delivers higher water flow for better jet performance than the 48 frame motors found in most spas. They also run cooler for longer life and have lower amp draw for lower operating costs.



Purity

Perfect moments deserve perfect, crystal clear water. The water maintenance of your spa is made easy by the exclusive features of the MAAX Collections' complete 4 step cleaning system and dual sanitization.



Filtration

Water is first drawn into the system from both the upper skimmer and lower footwell areas. The **1000 gpm intake** draws water through the filter system to capture surface debris and contaminants.



1000 Gallon Per Minute Intake with protective grill

4 Step Filtration System

1. **Weir Door** - Breaks the water surface tension and traps debris
2. **First Filter** - Removes oil and ultra fine particulates when filtering
3. **Basket** - Captures debris before filtering for easy removal
4. **Spa Filter** - Oversized filter permits high flow and cleans water



Exclusive Features

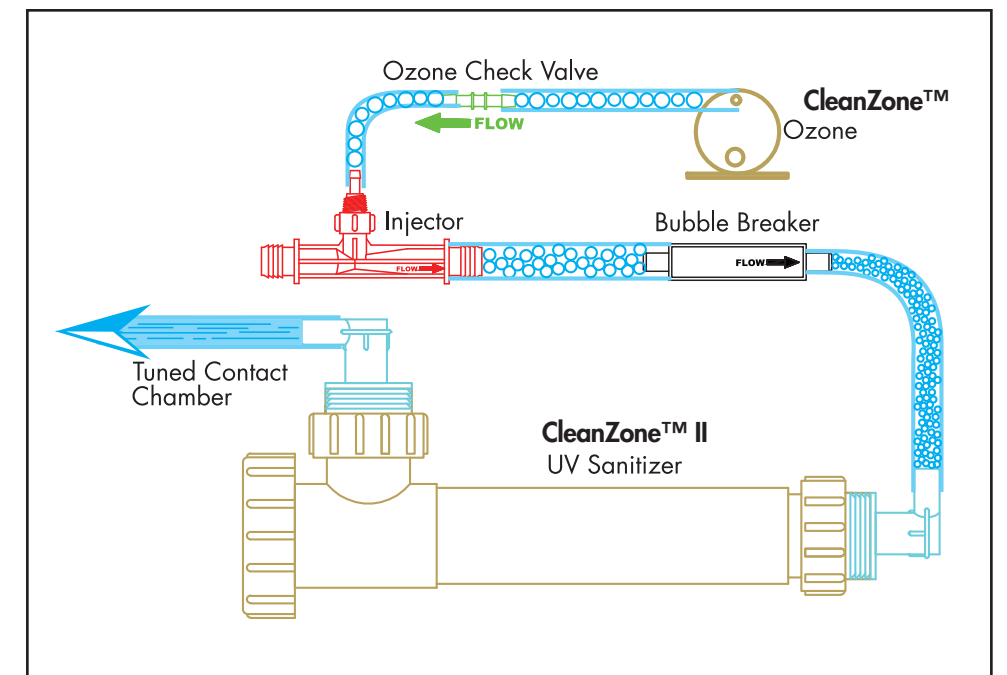
First Filter™

Our unique **First Filter™** removes silt and fine particulates that would pass undetected through an ordinary filter. The skimmer basket traps larger materials such as leaves and debris - and the basket is then easily removed for quick cleaning. A MAAX Collection exclusive feature.



Dual Sanitization System

The dual sanitization systems utilizes the oxidation power of ozone combined with sanitization power of UVC light to provide clean clear water. This is the same technology that is used to sanitize drinking water all over the world.



CleanZone™

MAAX Collection's **CleanZone™** water purification system will automatically maintain healthy, crystal clear water while greatly reducing chemical maintenance. CleanZone™ is a cartridge oxidizer that generates oxygen and cleans your spa water.



CleanZone™ II

The Clean Zone™ II system uses the power of UVC light, the same technology utilized in many communities around the world to purify drinking water. Clean Zone™ II kills 99.9%* of microorganisms, bacteria, viruses and parasites. This system is the perfect blend of hygiene, purity and technology.



Appliance Grade

The steel structure and Thermo-Lock® design in MAAX Collection hot tubs allows for complete service of the entire structure and all mechanical parts. Essentially the spa can be serviced and brought back to factory specifications right in your backyard. We call this feature "appliance grade". It is important to consider the serviceability of your hot tub, just as you would in any other home appliance.



Lifetime Steel Structure Warranty

The steel frame is the backbone and support for the entire spa. The Steel Structure of your MAAX Collection spa carries a lifetime warranty. This means for the lifetime of your ownership you can feel secure knowing any component of the structural frame will be replaced or fixed to factory specifications should it become damaged in the operation of the spa.



- **40% lighter, yet 250% stronger than traditional wood frames.**
- **Weatherproof**
- **Corrosion-free**

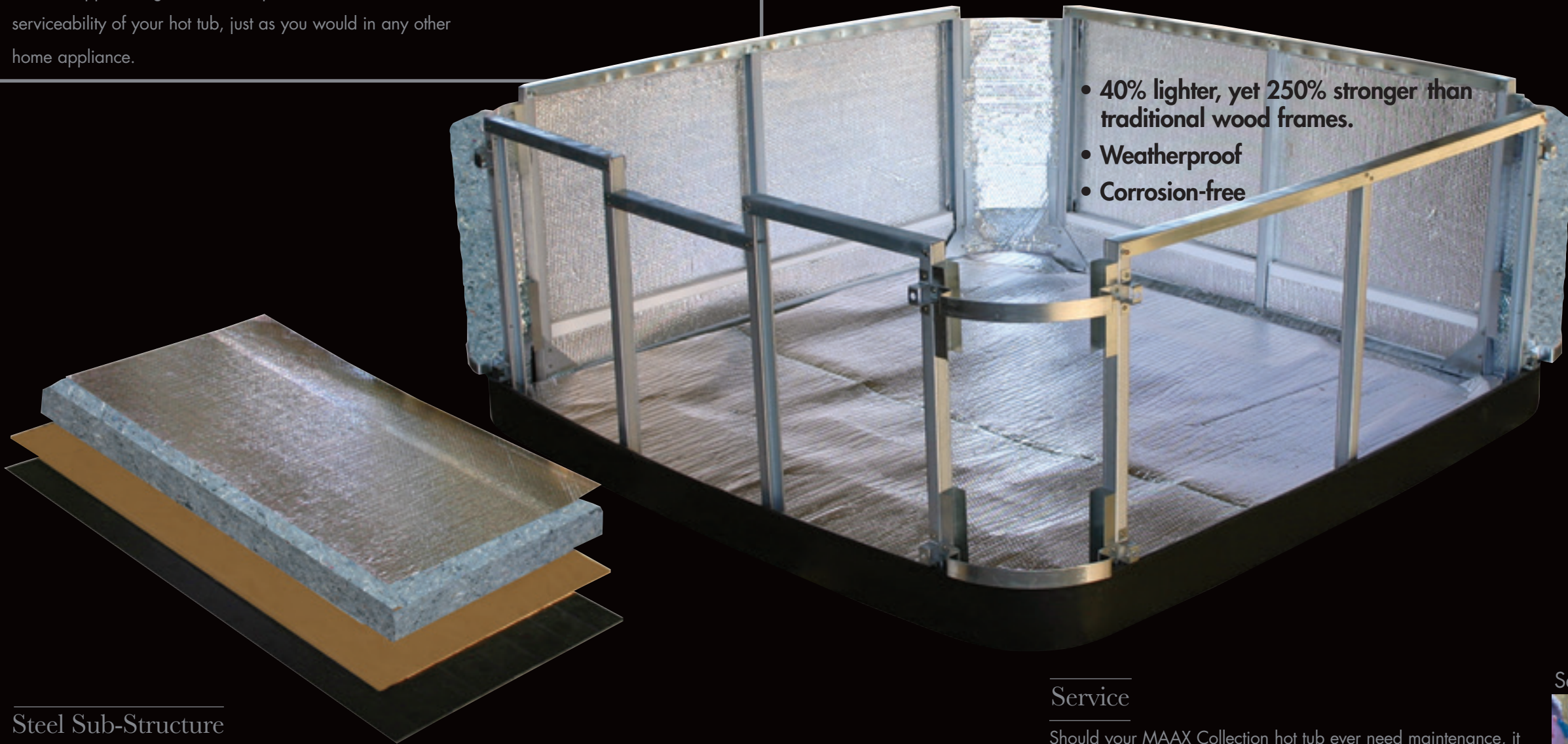
ABS Sealed Base

The **ABS Sealed Base** is an integral part of the support structure in a MAAX Collection hot tub. Its one-piece construction provides a rugged foundation that seals the bottom of the spa, locking in heat and sealing out moisture.



Steel Sub-Structure

The **Steel Sub-Structure** used in MAAX Collection hot tubs has the highest strength to weight ratio of any building material available. The light-gauge steel frame provides greater structural integrity than wood, as well as superior corrosion protection for a much longer life. Unlike wood, steel is dimensionally stable. It will not expand or contract with moisture, which over time can damage the spa's exterior. Sturdy and built to last, the inorganic properties will never rot, warp, split or crack and eliminate worries of animal infestation or termite damage. Stronger, more durable, and ideal for the environment - it's the obvious choice for a lifetime of worry-free fun.



Service

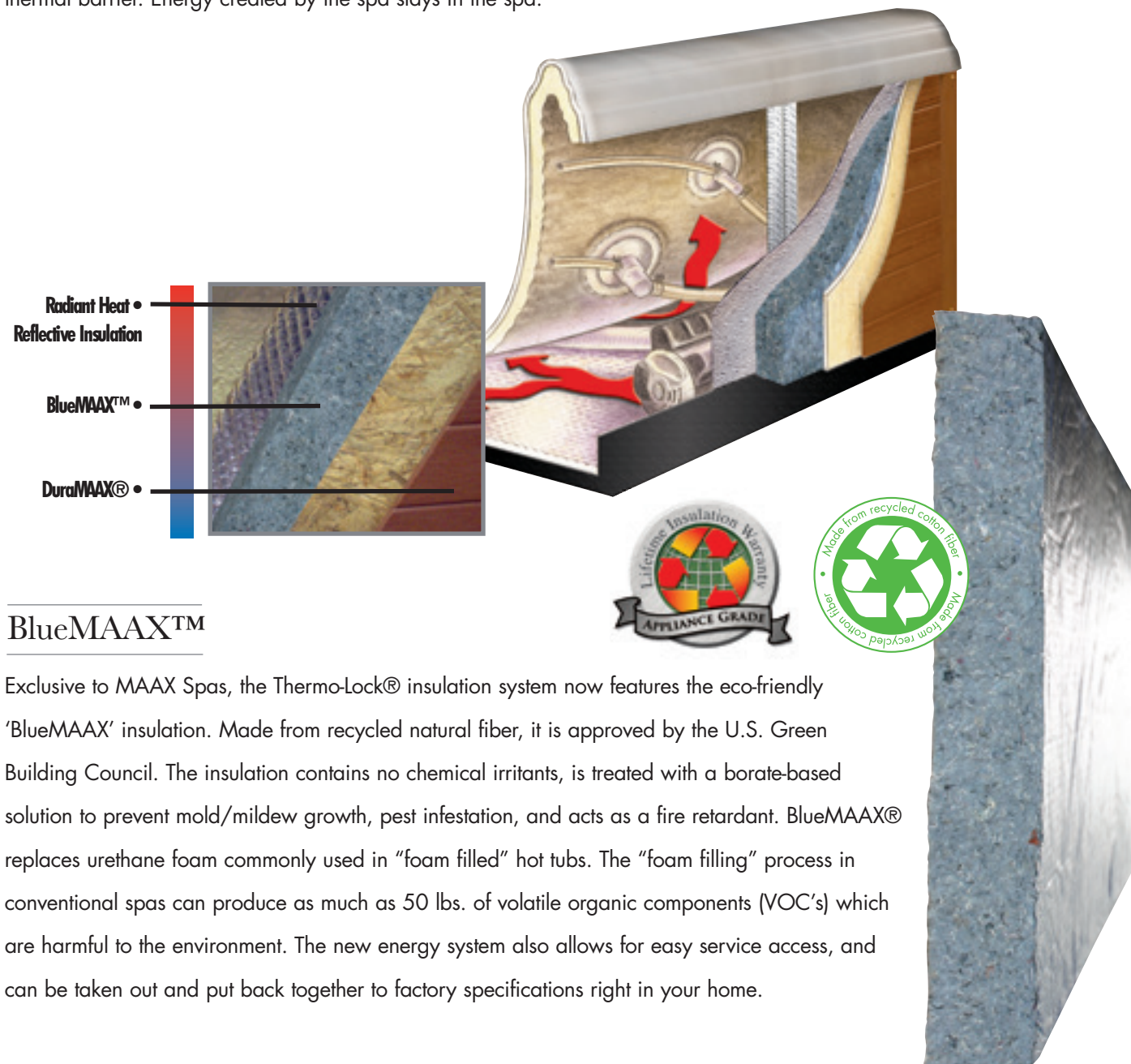
Should your MAAX Collection hot tub ever need maintenance, it can be serviced and put completely back together to factory specifications. This is not possible with conventional foam-filled hot tubs as these older designs are extremely hard to service and are typically damaged in the process. It is very costly to bring these older designs back to factory installation specifications.

Servicing a Foamed Filled Spa



Thermo-Lock®

Thermo-Lock® is the ultimate in sound and heat energy management for your hot tub. The unique thermal barrier technology recycles radiant heat energy for faster, more efficient heating and energy cost reductions. Radiant heat energy from the pumps and equipment reflects back to the spa and is absorbed into the plumbing. This helps raise and maintain water temperature, improving heat efficiency. Radiant heat reflective insulation is applied to the sealed ABS base, which prohibits heat loss through the floor. All four sides, plus the floor are lined with reflective material, combined with BlueMAAX® to create an infrared thermal barrier. Energy created by the spa stays in the spa.



BlueMAAX™

Exclusive to MAAX Spas, the Thermo-Lock® insulation system now features the eco-friendly 'BlueMAAX' insulation. Made from recycled natural fiber, it is approved by the U.S. Green Building Council. The insulation contains no chemical irritants, is treated with a borate-based solution to prevent mold/mildew growth, pest infestation, and acts as a fire retardant. BlueMAAX® replaces urethane foam commonly used in "foam filled" hot tubs. The "foam filling" process in conventional spas can produce as much as 50 lbs. of volatile organic components (VOC's) which are harmful to the environment. The new energy system also allows for easy service access, and can be taken out and put back together to factory specifications right in your home.

Lifetime Insulation Warranty

The insulation system in your new MAAX Collection hot tub is warranted to maintain the same insulation value as it had at the time it was manufactured. The high R value, appliance grade construction will allow a technician to service the entire spa and bring it back to factory specifications at home, for the lifetime you own your spa. As you enjoy your spa over the years you'll feel secure knowing it can be maintained at the same high level of efficiency as the day it was made.



Quiet

The same insulation that makes a MAAX Collection hot tub energy efficient also aids in its quiet operation. Sound energy is trapped and deadened inside the spa by the insulation barriers. Quiet operation is essential to ensure a peaceful and relaxing experience throughout the entire backyard environment.



Insulating Covers

MAAX Collection's premium grade **insulating covers** are unique and the tailored fit design keeps water from evaporating while maintaining the perfect spa temperature. The cover also acts as an important safety barrier to the spa.

MP3/Bluetooth Music System

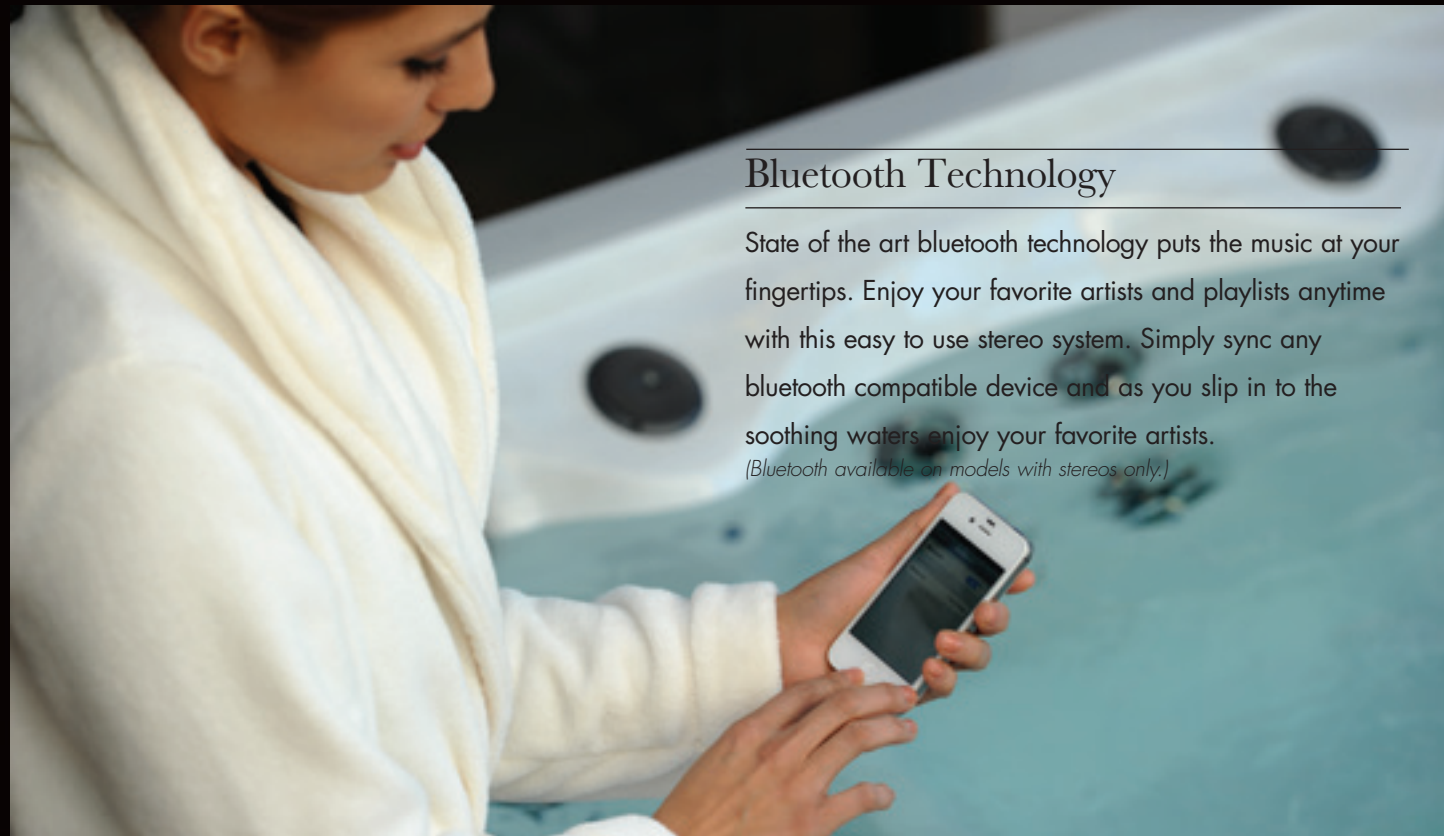
Listen to your music anytime with the MP3/Bluetooth Music System. Either plug in directly or connect via Bluetooth and enjoy your favorite play lists from any mobile device. *(available on models with stereos only.)*



Earphoria

Bluetooth Technology

State of the art bluetooth technology puts the music at your fingertips. Enjoy your favorite artists and playlists anytime with this easy to use stereo system. Simply sync any bluetooth compatible device and as you slip in to the soothing waters enjoy your favorite artists. *(Bluetooth available on models with stereos only.)*



Fully Integrated Speakers

Two fully integrated speakers provide crisp clear fidelity for your listening enjoyment.



Sub-Woofer

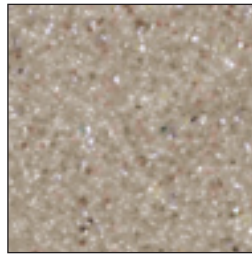
When you choose the MAAX Collection Sound System, sound will resonate through the water from the powerful subwoofer, which is integrated directly into your spa's structure. The technology allows you to not only hear, but also feel your music.

Continuous Cast Acrylic

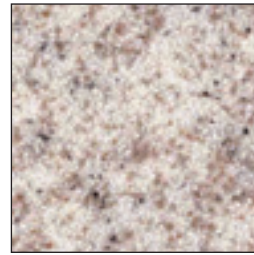
Every MAAX Collection hot tub has an attractive interior finish made from **continuous cast acrylic**. This is superior to Ethylene "soft plastic" surfaces. The hard, non-porous surface resists stains, fading, scratches and chemical abuse. With the look of granite, pearl or metalescence, the extremely rugged and durable finish offers beauty and peace of mind.

Acrylic Colors

Desert



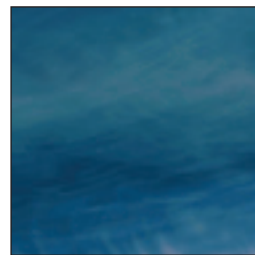
Sahara



Latte



Pacific Rim



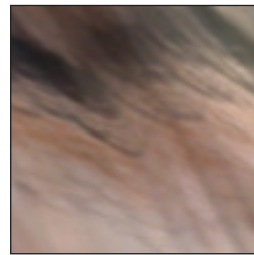
Glacier Mountain



Gypsum



Tuscan Sun



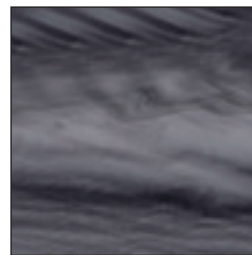
Silver Marble



Midnight Canyon



Storm Clouds



Winter Solstice



DuraMAAX® Siding

DuraMAAX® is a state of the art wood-alternative material that has the look and feel of natural wood, without the maintenance. The material is impact resistant, impervious to weather or insect damage and will never splinter, crack or rot. The attractive exterior locks in heat and seals out cold air providing a beautiful look and feel.



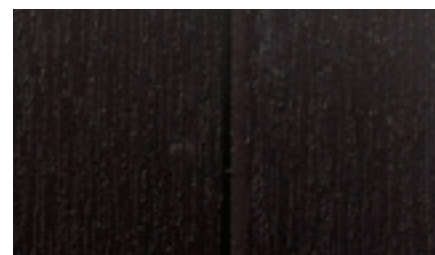
Teak



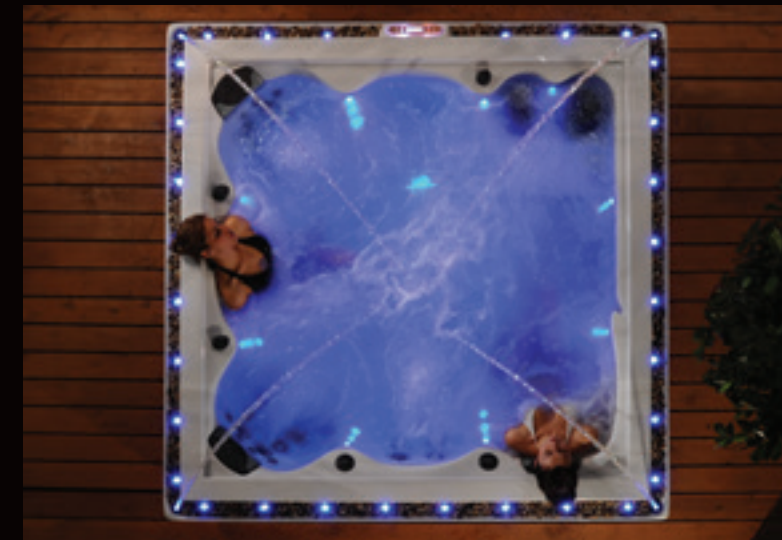
Gray



Mocha



Aesthetics



Lighting

Built-in **internal and optional pedestal lighting** illuminates the spa for both safety and romance. A selection of unique color options can further enhance an already perfect evening, taking backyard fun to soaring new heights.

Illuminated Water Features

Enjoy the soothing sound of the eye-catching **illuminated water feature**.

Ergonomic Massage Controller

The Ergonomic Massage Controller is illuminated to work in harmony with the other lighting options. It provides an ergonomic grip for easy adjustment of the jet pressure.



Confidence



Warranty

To ensure your confidence, MAAX Collection hot tubs offer an industry-leading warranty against structural, surface and cosmetic defects, as well as water loss and failure in mechanical or electrical equipment. Further, our Steel Sub-Structure is covered by a lifetime structural guarantee.

Vessel Structure

Surface

Equipment, Plumbing and Labor

Over 45 Years of expertise in luxury hot water products

1969

ORIGIN OF MODERN FIBERGLASS



1987

MAAX IS BORN

Listing on Montreal Stock Exchange
The name MAAX is Coined



2007

MAAX COMPANY

MAAX Inc. ranks among the five largest firms in North America

24 plants and independent distribution centers
2,900 employees



2009

PATENTED DESIGN

Urban Series Design debuts in tradeshows world wide and DWELL Design Show



1973

BATH PRODUCTION BEGINS

Productions of progressive fiberglass bath tubs and showers begins

1997

MAAX ENTERS SPA CATEGORY

Acquisition of 15yr. old Coleman Spas
Acquisition of 23yr. old California Cooperage

2008

MAAX ACQUIRED BY BROOKFIELD

Becomes part of the largest company in the world involved in the manufacturing of spas

2015

CONTINUED GROWTH

MAAX Spas continues to grow and is now ranked as one of the largest manufacturers of hot tubs and swim spas

Only a MAAX Spas dealer can give you the feeling of satisfaction from owning the most technically advanced hot tub in the world.
visit www.MAAXCollectionhottubs.com

MAAX Spas Industries Corp.
25605 S. Arizona Avenue,
Chandler, AZ 85248



2015